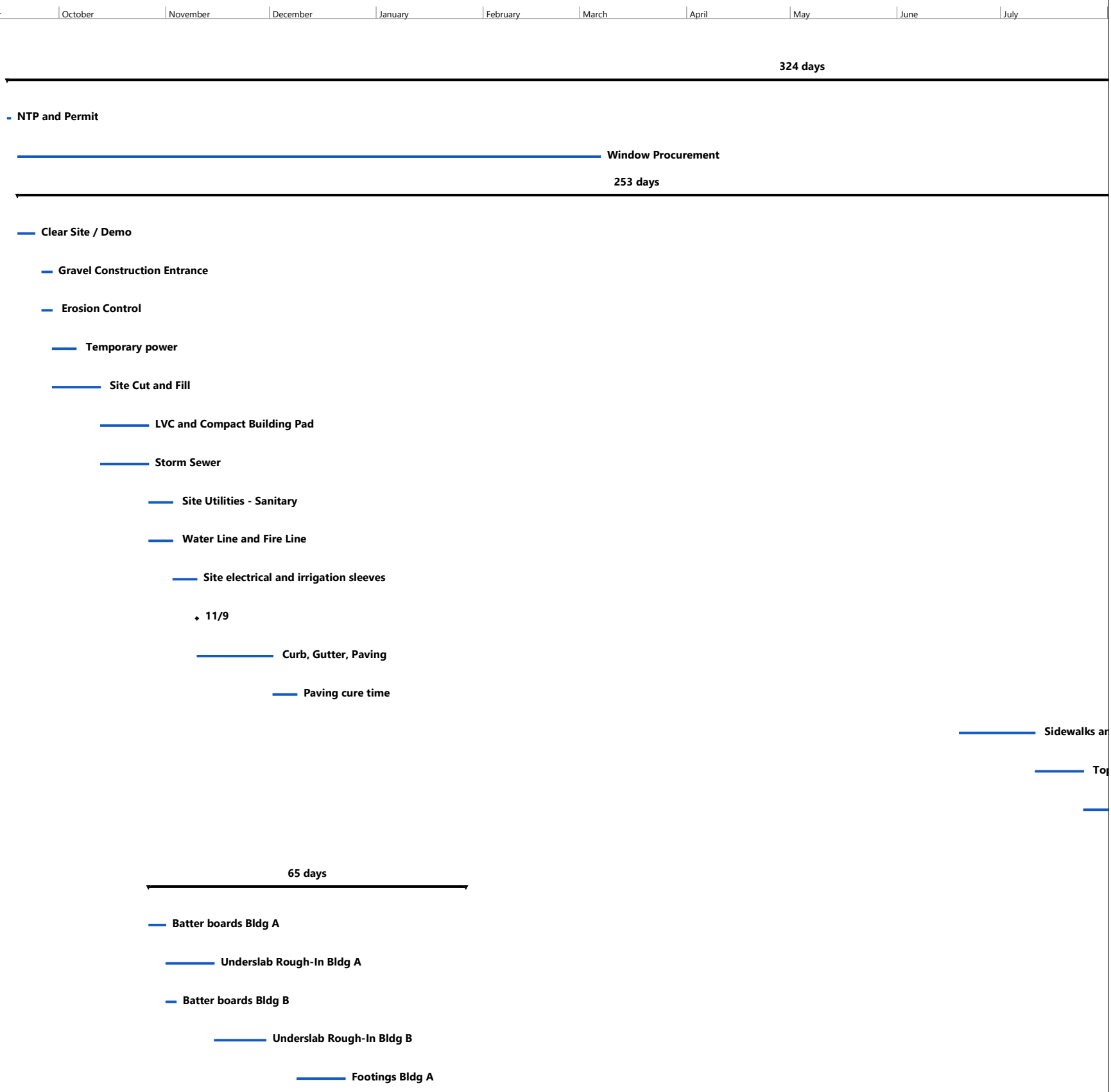


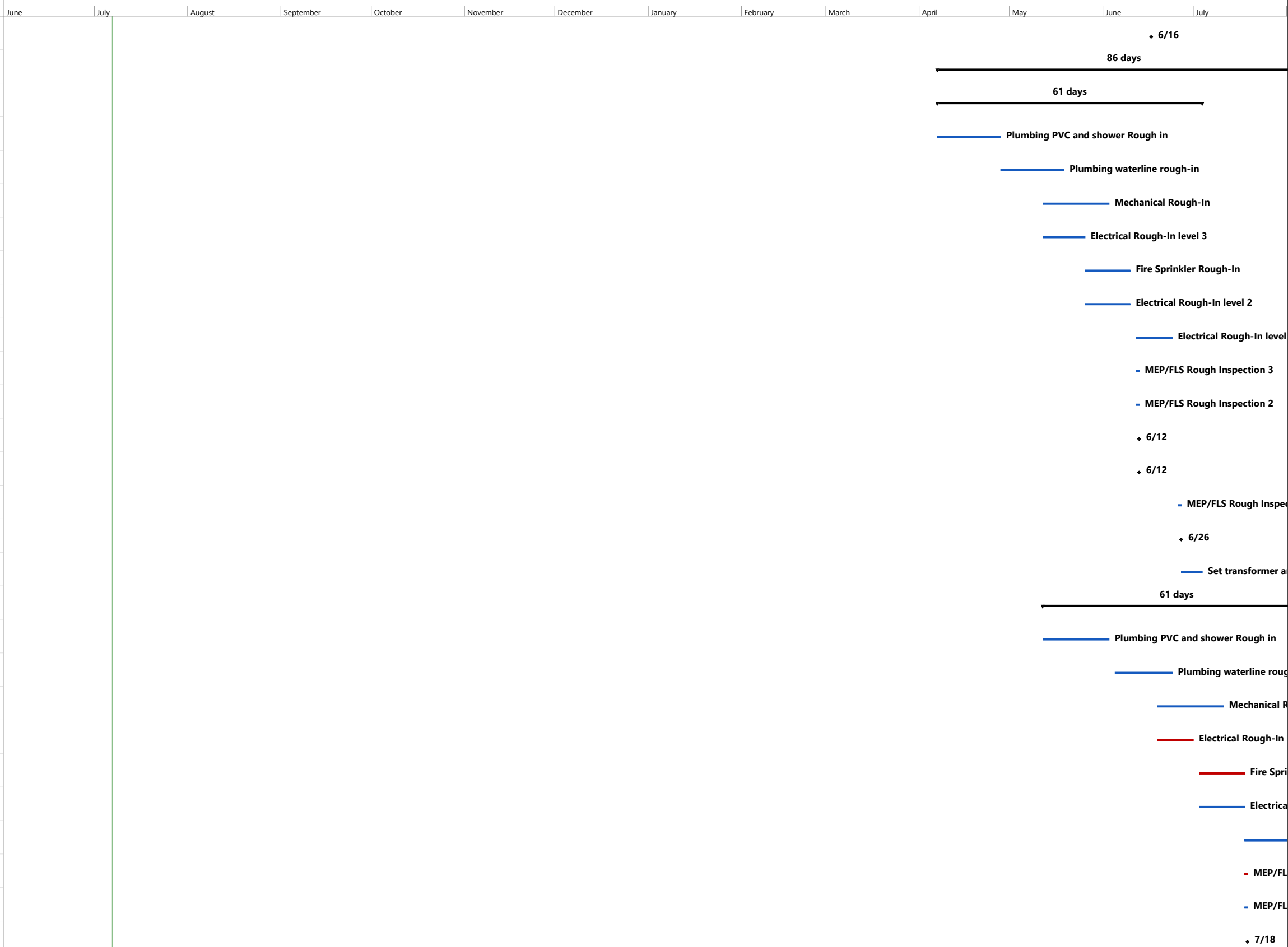
ID	% Comp	Task Name	Duration	Start	Finish
0	0%	Grinnell schedule	324 days	Fri 9/16/22	Wed 12/20/23
1	0%	Construction	324 days	Fri 9/16/22	Wed 12/20/23
2	0%	NTP and Permit	1 day	Fri 9/16/22	Fri 9/16/22
4	0%	Window Procurement	6 months	Mon 9/19/22	Mon 3/6/23
5	0%	Sitework	253 days	Mon 9/19/22	Tue 9/12/23
6	0%	Clear Site / Demo	5 days	Mon 9/19/22	Fri 9/23/22
7	0%	Gravel Construction Entrance	3 days	Mon 9/26/22	Wed 9/28/22
8	0%	Erosion Control	3 days	Mon 9/26/22	Wed 9/28/22
9	0%	Temporary power	5 days	Thu 9/29/22	Wed 10/5/22
10	0%	Site Cut and Fill	2 weeks	Thu 9/29/22	Wed 10/12/22
12	0%	LVC and Compact Building Pad	10 days	Thu 10/13/22	Wed 10/26/22
13	0%	Storm Sewer	10 days	Thu 10/13/22	Wed 10/26/22
11	0%	Site Utilities - Sanitary	5 days	Thu 10/27/22	Wed 11/2/22
14	0%	Water Line and Fire Line	5 days	Thu 10/27/22	Wed 11/2/22
15	0%	Site electrical and irrigation sleeves	5 days	Thu 11/3/22	Wed 11/9/22
16	0%	*** Milestone- Utilities done- start Curb&gutter&Paving	0 days	Wed 11/9/22	Wed 11/9/22
17	0%	Curb, Gutter, Paving	15 days	Thu 11/10/22	Thu 12/1/22
18	0%	Paving cure time	5 days	Fri 12/2/22	Thu 12/8/22
19	0%	Sidewalks and misc site concrete	15 days	Mon 6/19/23	Mon 7/10/23
20	0%	Top Soil	10 days	Tue 7/11/23	Mon 7/24/23
21	0%	Landscaping and Sprinklers	6 weeks	Tue 7/25/23	Tue 9/5/23
22	0%	Striping and Signage	5 days	Wed 9/6/23	Tue 9/12/23
23	0%	Foundations	65 days	Thu 10/27/22	Thu 1/26/23
24	0%	Batter boards Bldg A	3 days	Thu 10/27/22	Mon 10/31/22
26	0%	Underslab Rough-In Bldg A	10 days	Tue 11/1/22	Mon 11/14/22
27	0%	Batter boards Bldg B	3 days	Tue 11/1/22	Thu 11/3/22
31	0%	Underslab Rough-In Bldg B	10 days	Tue 11/15/22	Tue 11/29/22
25	0%	Footings Bldg A	10 days	Fri 12/9/22	Thu 12/22/22



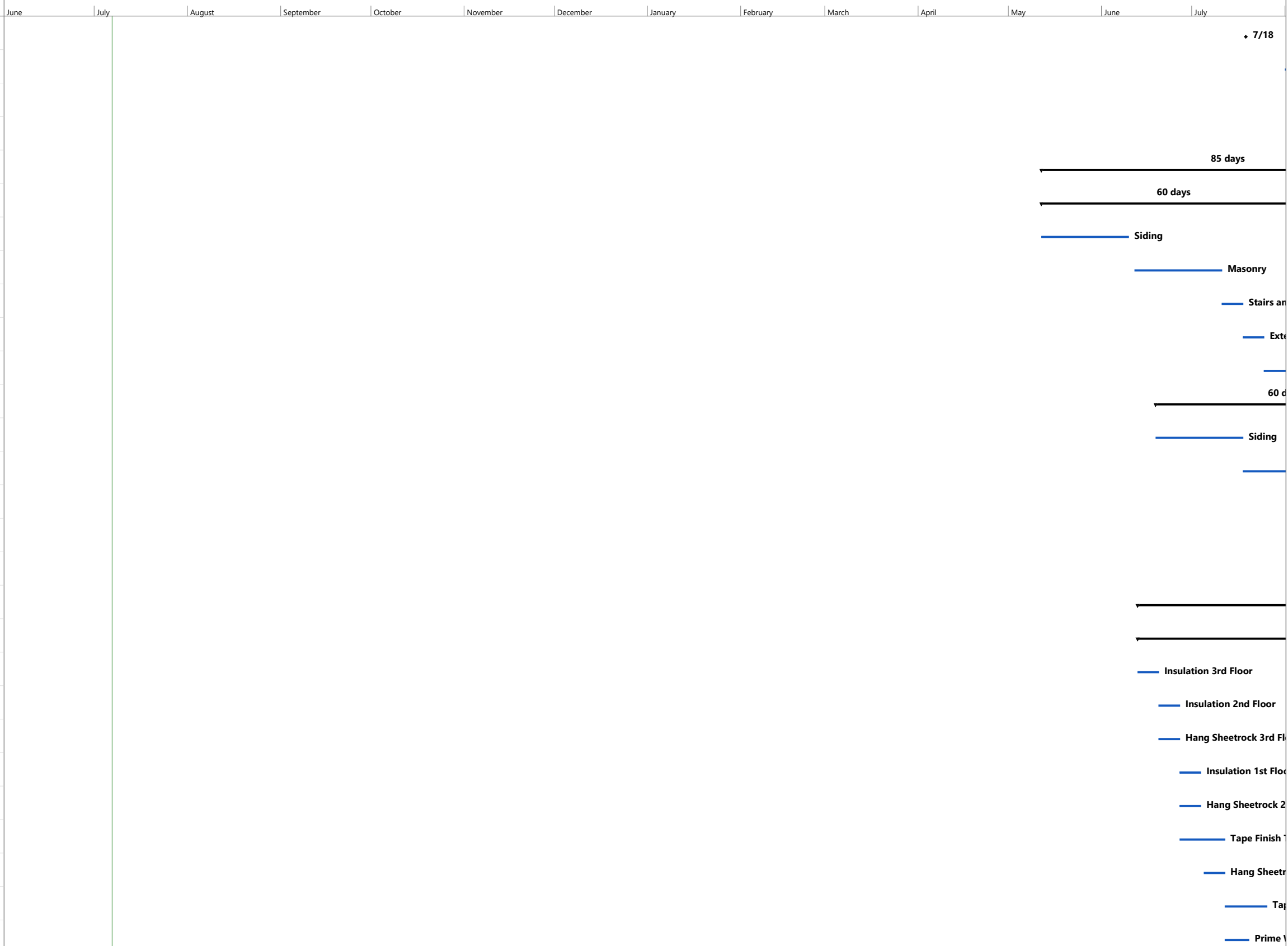
ID	% Comp	Task Name	Duration	Start	Finish
28	0%	Footings Bldg B	10 days	Fri 12/23/22	Thu 1/5/23
32	0%	Slab Bldg A	5 days	Fri 12/23/22	Thu 12/29/22
30	0%	Slab Bldg B	5 days	Fri 1/6/23	Thu 1/12/23
29	0%	Breezways Slab Pour	10 days	Fri 1/13/23	Thu 1/26/23
3	0%	Winter	12 weeks	Fri 12/23/22	Thu 3/16/23
46	0%	Structure	65 days	Thu 3/16/23	Fri 6/16/23
47	0%	*** Milestone- GO VERTICAL	0 days	Thu 3/16/23	Thu 3/16/23
48	0%	Bldg A	40 days	Fri 3/17/23	Thu 5/11/23
49	0%	Framing First floor walls & sheathing	5 days	Fri 3/17/23	Thu 3/23/23
50	0%	Framing 2nd floor Floor	5 days	Fri 3/24/23	Thu 3/30/23
51	0%	Framing 2nd floor walls & sheathing	5 days	Fri 3/31/23	Thu 4/6/23
52	0%	Framing 3rd floor Floor	5 days	Fri 4/7/23	Thu 4/13/23
53	0%	Framing 3rd floor walls & sheathing	5 days	Fri 4/14/23	Thu 4/20/23
54	0%	Framing roof trusses	5 days	Fri 4/21/23	Thu 4/27/23
55	0%	Roof Sheathing/Facia	5 days	Fri 4/28/23	Thu 5/4/23
56	0%	Window Installation	5 days	Fri 5/5/23	Thu 5/11/23
58	0%	Dry-in Roof	5 days	Fri 5/5/23	Thu 5/11/23
57	0%	***Milestone- Bldg A - DRYED IN	0 days	Thu 5/11/23	Thu 5/11/23
59	0%	Bldg B	40 days	Fri 4/21/23	Fri 6/16/23
60	0%	Framing First floor walls & sheathing	5 days	Fri 4/21/23	Thu 4/27/23
61	0%	Framing 2nd floor Floor	5 days	Fri 4/28/23	Thu 5/4/23
62	0%	Framing 2nd floor walls & sheathing	5 days	Fri 5/5/23	Thu 5/11/23
63	0%	Framing 3rd floor Floor	5 days	Fri 5/12/23	Thu 5/18/23
64	0%	Framing 3rd floor walls & sheathing	5 days	Fri 5/19/23	Thu 5/25/23
65	0%	Framing roof trusses	5 days	Fri 5/26/23	Fri 6/2/23
66	0%	Roof Sheathing/Facia	5 days	Mon 6/5/23	Fri 6/9/23
67	0%	Dry-in Roof	5 days	Mon 6/12/23	Fri 6/16/23
68	0%	Window Installation	5 days	Mon 6/12/23	Fri 6/16/23



ID	% Comp	Task Name	Duration	Start	Finish
69	0%	***Milestone- Bldg B - DRYED IN	0 days	Fri 6/16/23	Fri 6/16/23
70	0%	MEP Rough-ins	86 days	Fri 4/7/23	Tue 8/8/23
71	0%	Bldg A	61 days	Fri 4/7/23	Mon 7/3/23
72	0%	Plumbing PVC and shower Rough in	3 weeks	Fri 4/7/23	Thu 4/27/23
75	0%	Plumbing waterline rough-in	3 weeks	Fri 4/28/23	Thu 5/18/23
74	0%	Mechanical Rough-In	3 weeks	Fri 5/12/23	Fri 6/2/23
76	0%	Electrical Rough-In level 3	2 weeks	Fri 5/12/23	Thu 5/25/23
73	0%	Fire Sprinkler Rough-In	2 weeks	Fri 5/26/23	Fri 6/9/23
77	0%	Electrical Rough-In level 2	2 weeks	Fri 5/26/23	Fri 6/9/23
78	0%	Electrical Rough-In level 1	2 weeks	Mon 6/12/23	Fri 6/23/23
79	0%	MEP/FLS Rough Inspection 3	1 day	Mon 6/12/23	Mon 6/12/23
80	0%	MEP/FLS Rough Inspection 2	1 day	Mon 6/12/23	Mon 6/12/23
82	0%	** Milestone Roughin complete Level 3	0 days	Mon 6/12/23	Mon 6/12/23
83	0%	** Milestone Roughin complete Level 2	0 days	Mon 6/12/23	Mon 6/12/23
81	0%	MEP/FLS Rough Inspection 1	1 day	Mon 6/26/23	Mon 6/26/23
84	0%	** Milestone Roughin complete Level 1	0 days	Mon 6/26/23	Mon 6/26/23
85	0%	Set transformer and House meter	5 days	Tue 6/27/23	Mon 7/3/23
86	0%	Bldg B	61 days	Fri 5/12/23	Tue 8/8/23
87	0%	Plumbing PVC and shower Rough in	3 weeks	Fri 5/12/23	Fri 6/2/23
88	0%	Plumbing waterline rough-in	3 weeks	Mon 6/5/23	Fri 6/23/23
89	0%	Mechanical Rough-In	3 weeks	Mon 6/19/23	Mon 7/10/23
91	0%	Electrical Rough-In level 3	2 weeks	Mon 6/19/23	Fri 6/30/23
90	0%	Fire Sprinkler Rough-In	2 weeks	Mon 7/3/23	Mon 7/17/23
92	0%	Electrical Rough-In level 2	2 weeks	Mon 7/3/23	Mon 7/17/23
93	0%	Electrical Rough-In level 1	2 weeks	Tue 7/18/23	Mon 7/31/23
94	0%	MEP/FLS Rough Inspection 3	1 day	Tue 7/18/23	Tue 7/18/23
95	0%	MEP/FLS Rough Inspection 2	1 day	Tue 7/18/23	Tue 7/18/23
96	0%	** Milestone Roughin complete Level 3	0 days	Tue 7/18/23	Tue 7/18/23



ID	% Comp	Task Name	Duration	Start	Finish
97	0%	** Milestone Roughin complete Level 2	0 days	Tue 7/18/23	Tue 7/18/23
98	0%	MEP/FLS Rough Inspection 1	1 day	Tue 8/1/23	Tue 8/1/23
99	0%	** Milestone Roughin complete Level 1	0 days	Tue 8/1/23	Tue 8/1/23
100	0%	Set transformer and House meter	5 days	Wed 8/2/23	Tue 8/8/23
33	0%	Exterior	85 days	Fri 5/12/23	Tue 9/12/23
34	0%	Bldg A	60 days	Fri 5/12/23	Mon 8/7/23
35	0%	Siding	4 weeks	Fri 5/12/23	Fri 6/9/23
36	0%	Masonry	4 weeks	Mon 6/12/23	Mon 7/10/23
37	0%	Stairs and Railings	5 days	Tue 7/11/23	Mon 7/17/23
38	0%	Exterior Caulking	1 week	Tue 7/18/23	Mon 7/24/23
39	0%	Exterior Painting	2 weeks	Tue 7/25/23	Mon 8/7/23
40	0%	Bldg B	60 days	Mon 6/19/23	Tue 9/12/23
41	0%	Siding	4 weeks	Mon 6/19/23	Mon 7/17/23
42	0%	Masonry	4 weeks	Tue 7/18/23	Mon 8/14/23
43	0%	Stairs and Railings	5 days	Tue 8/15/23	Mon 8/21/23
44	0%	Exterior Caulking	1 week	Tue 8/22/23	Mon 8/28/23
45	0%	Exterior Painting	2 weeks	Tue 8/29/23	Tue 9/12/23
101	0%	Finishes & Trim Out	117 days	Tue 6/13/23	Fri 11/24/23
142	0%	Bldg A	92 days	Tue 6/13/23	Fri 10/20/23
143	0%	Insulation 3rd Floor	5 days	Tue 6/13/23	Mon 6/19/23
144	0%	Insulation 2nd Floor	5 days	Tue 6/20/23	Mon 6/26/23
145	0%	Hang Sheetrock 3rd Floor	5 days	Tue 6/20/23	Mon 6/26/23
146	0%	Insulation 1st Floor	5 days	Tue 6/27/23	Mon 7/3/23
147	0%	Hang Sheetrock 2nd Floor	5 days	Tue 6/27/23	Mon 7/3/23
148	0%	Tape Finish Texture Sheetrock 3rd Floor	10 days	Tue 6/27/23	Tue 7/11/23
149	0%	Hang Sheetrock 1st Floor	5 days	Wed 7/5/23	Tue 7/11/23
150	0%	Tape Finish Texture Sheetrock 2nd Floor	10 days	Wed 7/12/23	Tue 7/25/23
151	0%	Prime Walls and Paint ceilings 3rd Floor	6 days	Wed 7/12/23	Wed 7/19/23



ID	% Comp	Task Name	Duration	Start	Finish	Timeline (June to July)											
152	0%	Gypcrete 3rd Floor	2 days	Thu 7/20/23	Fri 7/21/23	[Timeline visualization]											
153	0%	Doors and Trim 3rd Floor	8 days	Mon 7/24/23	Wed 8/2/23	[Timeline visualization]											
154	0%	Tape Finish Texture Sheetrock 1st Floor	8 days	Wed 7/26/23	Fri 8/4/23	[Timeline visualization]											
156	0%	Prime Walls and Paint ceilings 2rd Floor	6 days	Wed 7/26/23	Wed 8/2/23	[Timeline visualization]											
155	0%	Final Paint 3rd Floor	5 days	Thu 8/3/23	Wed 8/9/23	[Timeline visualization]											
160	0%	Gypcrete 2nd Floor	2 days	Thu 8/3/23	Fri 8/4/23	[Timeline visualization]											
159	0%	Prime Walls and Paint ceilings 1st Floor	6 days	Mon 8/7/23	Mon 8/14/23	[Timeline visualization]											
161	0%	Doors and Trim 2rd Floor	8 days	Mon 8/7/23	Wed 8/16/23	[Timeline visualization]											
157	0%	Mechanical Trimout 3rd Floor	5 days	Thu 8/10/23	Wed 8/16/23	[Timeline visualization]											
158	0%	Electrical Trimout 3rd Floor	5 days	Thu 8/10/23	Wed 8/16/23	[Timeline visualization]											
162	0%	Flooring Hardgoods 3rd Floor	5 days	Thu 8/17/23	Wed 8/23/23	[Timeline visualization]											
164	0%	Doors and Trim 1st Floor	6 days	Thu 8/17/23	Thu 8/24/23	[Timeline visualization]											
165	0%	Final Paint 2nd Floor	5 days	Thu 8/17/23	Wed 8/23/23	[Timeline visualization]											
163	0%	Cabinets and Countertops 3rd Floor	5 days	Thu 8/24/23	Wed 8/30/23	[Timeline visualization]											
166	0%	Mechanical Trimout 2nd Floor	5 days	Thu 8/24/23	Wed 8/30/23	[Timeline visualization]											
167	0%	Electrical Trimout 2nd Floor	5 days	Thu 8/24/23	Wed 8/30/23	[Timeline visualization]											
168	0%	Final Paint 1st Floor	5 days	Fri 8/25/23	Thu 8/31/23	[Timeline visualization]											
169	0%	Flooring Hardgoods 2nd Floor	5 days	Thu 8/31/23	Thu 9/7/23	[Timeline visualization]											
174	0%	Plumbing Trimout 3rd Floor	5 days	Thu 8/31/23	Thu 9/7/23	[Timeline visualization]											
170	0%	Mechanical Trimout 1st Floor	5 days	Fri 9/1/23	Fri 9/8/23	[Timeline visualization]											
171	0%	Electrical Trimout 1st Floor	5 days	Fri 9/1/23	Fri 9/8/23	[Timeline visualization]											
172	0%	Cabinets and Countertops 2nd Floor	5 days	Fri 9/8/23	Thu 9/14/23	[Timeline visualization]											
173	0%	Flooring Hardgoods 1st Floor	5 days	Mon 9/11/23	Fri 9/15/23	[Timeline visualization]											
175	0%	Plumbing Trimout 2nd Floor	5 days	Fri 9/15/23	Thu 9/21/23	[Timeline visualization]											
178	0%	Cabinets and Countertops 1st Floor	5 days	Mon 9/18/23	Fri 9/22/23	[Timeline visualization]											
177	0%	Flooring Carpet	10 days	Fri 9/22/23	Thu 10/5/23	[Timeline visualization]											
176	0%	Base Shoe and Hardware	10 days	Mon 9/25/23	Fri 10/6/23	[Timeline visualization]											
179	0%	Plumbing Trimout 1st Floor	5 days	Mon 9/25/23	Fri 9/29/23	[Timeline visualization]											

Project: Grinnell schedule.mpp
Date: Thu 7/7/22

Legend for task types and progress indicators:

- Task: Solid blue line
- Split: Dotted blue line
- Milestone: Diamond symbol
- Summary: Solid black line
- Project Summary: Dotted black line
- Inactive Task: Dashed black line
- Inactive Milestone: Diamond with horizontal line
- Inactive Summary: Dotted black line
- Manual Task: Solid black line
- Duration-only: Solid green line
- Manual Summary Rollup: Dotted green line
- Manual Summary: Solid green line
- Start-only: Solid green line with diamond
- Finish-only: Solid green line with diamond
- External Tasks: Solid black line with diamond
- External Milestone: Diamond symbol
- Deadline: Solid black line with diamond
- Critical: Solid red line
- Critical Split: Dotted red line
- Baseline: Solid black line with diamond
- Baseline Milestone: Diamond symbol
- Baseline Summary: Dotted black line
- Progress: Solid black line
- Manual Progress: Dotted black line

ID	% Comp	Task Name	Duration	Start	Finish	Timeline (June to July)											
180	0%	Rough-Cleaning	5 days	Mon 10/9/23	Fri 10/13/23												
181	0%	Appliance Installation (Apartments)	5 days	Mon 10/16/23	Fri 10/20/23												
102	0%	Bldg B	92 days	Wed 7/19/23	Fri 11/24/23												
103	0%	Insulation 3rd Floor	5 days	Wed 7/19/23	Tue 7/25/23												
104	0%	Insulation 2nd Floor	5 days	Wed 7/26/23	Tue 8/1/23												
105	0%	Hang Sheetrock 3rd Floor	5 days	Wed 7/26/23	Tue 8/1/23												
106	0%	Insulation 1st Floor	5 days	Wed 8/2/23	Tue 8/8/23												
107	0%	Hang Sheetrock 2nd Floor	5 days	Wed 8/2/23	Tue 8/8/23												
108	0%	Tape Finish Texture Sheetrock 3rd Floor	10 days	Wed 8/2/23	Tue 8/15/23												
109	0%	Hang Sheetrock 1st Floor	5 days	Wed 8/9/23	Tue 8/15/23												
110	0%	Tape Finish Texture Sheetrock 2nd Floor	10 days	Wed 8/16/23	Tue 8/29/23												
111	0%	Prime Walls and Paint ceilings 3rd Floor	6 days	Wed 8/16/23	Wed 8/23/23												
112	0%	Gypcrete 3rd Floor	2 days	Thu 8/24/23	Fri 8/25/23												
113	0%	Doors and Trim 3rd Floor	8 days	Mon 8/28/23	Thu 9/7/23												
114	0%	Tape Finish Texture Sheetrock 1st Floor	8 days	Wed 8/30/23	Mon 9/11/23												
115	0%	Prime Walls and Paint ceilings 2nd Floor	6 days	Wed 8/30/23	Thu 9/7/23												
116	0%	Final Paint 3rd Floor	5 days	Fri 9/8/23	Thu 9/14/23												
117	0%	Gypcrete 2nd Floor	2 days	Fri 9/8/23	Mon 9/11/23												
118	0%	Prime Walls and Paint ceilings 1st Floor	6 days	Tue 9/12/23	Tue 9/19/23												
119	0%	Doors and Trim 2nd Floor	8 days	Tue 9/12/23	Thu 9/21/23												
120	0%	Mechanical Trimout 3rd Floor	5 days	Fri 9/15/23	Thu 9/21/23												
121	0%	Electrical Trimout 3rd Floor	5 days	Fri 9/15/23	Thu 9/21/23												
122	0%	Flooring Hardgoods 3rd Floor	5 days	Fri 9/22/23	Thu 9/28/23												
123	0%	Doors and Trim 1st Floor	6 days	Fri 9/22/23	Fri 9/29/23												
124	0%	Final Paint 2nd Floor	5 days	Fri 9/22/23	Thu 9/28/23												
125	0%	Cabinets and Countertops 3rd Floor	5 days	Fri 9/29/23	Thu 10/5/23												
126	0%	Mechanical Trimout 2nd Floor	5 days	Fri 9/29/23	Thu 10/5/23												
127	0%	Electrical Trimout 2nd Floor	5 days	Fri 9/29/23	Thu 10/5/23												

Ins

ID	% Comp	Task Name	Duration	Start	Finish	Timeline (June to July)											
129	0%	Flooring Hardgoods 2nd Floor	5 days	Fri 9/29/23	Thu 10/5/23												
128	0%	Final Paint 1st Floor	5 days	Mon 10/2/23	Fri 10/6/23												
130	0%	Plumbing Trimout 3rd Floor	5 days	Fri 10/6/23	Thu 10/12/23												
133	0%	Cabinets and Countertops 2nd Floor	5 days	Fri 10/6/23	Thu 10/12/23												
131	0%	Mechanical Trimout 1st Floor	5 days	Mon 10/9/23	Fri 10/13/23												
132	0%	Electrical Trimout 1st Floor	5 days	Mon 10/9/23	Fri 10/13/23												
135	0%	Plumbing Trimout 2nd Floor	5 days	Fri 10/13/23	Thu 10/19/23												
134	0%	Flooring Hardgoods 1st Floor	5 days	Mon 10/16/23	Fri 10/20/23												
137	0%	Flooring Carpet	10 days	Fri 10/20/23	Thu 11/2/23												
136	0%	Cabinets and Countertops 1st Floor	5 days	Mon 10/23/23	Fri 10/27/23												
138	0%	Base Shoe and Hardware	10 days	Mon 10/30/23	Fri 11/10/23												
139	0%	Plumbing Trimout 1st Floor	5 days	Mon 10/30/23	Fri 11/3/23												
140	0%	Rough-Cleaning	5 days	Mon 11/13/23	Fri 11/17/23												
141	0%	Appliance Installation (Apartments)	5 days	Mon 11/20/23	Fri 11/24/23												
182	0%	Closeout	47 days	Mon 10/16/23	Wed 12/20/23												
183	0%	Bldg A	27 days	Mon 10/16/23	Tue 11/21/23												
184	0%	MCP Punch	10 days	Mon 10/16/23	Fri 10/27/23												
186	0%	City Final Inspection and TCO	2 days	Mon 10/23/23	Tue 10/24/23												
185	0%	Final Clean	5 days	Mon 10/30/23	Fri 11/3/23												
187	0%	Architect and Owner Punch	1 day	Mon 11/6/23	Mon 11/6/23												
188	0%	Final Punch Completion/Clean	10 days	Tue 11/7/23	Mon 11/20/23												
189	0%	Final CO	1 day	Tue 11/21/23	Tue 11/21/23												
190	0%	Bldg B	22 days	Mon 11/20/23	Wed 12/20/23												
191	0%	MCP Punch	10 days	Mon 11/20/23	Mon 12/4/23												
192	0%	City Final Inspection and TCO	2 days	Mon 11/27/23	Wed 11/29/23												
193	0%	Final Clean	5 days	Tue 12/5/23	Mon 12/11/23												
194	0%	Architect and Owner Punch	1 day	Tue 12/12/23	Tue 12/12/23												
195	0%	Final Punch Completion/Clean	5 days	Wed 12/13/23	Tue 12/19/23												

Project: Grinnell schedule.mpp
Date: Thu 7/7/22

Task		Summary		Inactive Milestone		Duration-only		Start-only		External Milestone		Critical Split		Baseline Summary	
Split		Project Summary		Inactive Summary		Manual Summary Rollup		Finish-only		Deadline		Baseline		Progress	
Milestone		Inactive Task		Manual Task		Manual Summary		External Tasks		Critical		Baseline Milestone		Manual Progress	

ID	% Comp	T	M	Task Name	Duration	Start	Finish														
196	0%			Final CO	1 day	Wed 12/20/23	Wed 12/20/23	June	July	August	September	October	November	December	January	February	March	April	May	June	July