



# SCHWERDT DESIGN GROUP, INC

Architecture

Interiors

Planning

Topeka, Kansas  
Oklahoma City, Oklahoma

---

---

## ADDENDUM NO. 1

---

---

**DATE:** June 28, 2021

**PROJECT NO:** 200014  
**AE Gage Center – Servery &  
TV/Radio Studio Demo**

**RE:** **Drawing Revisions, Additions,  
& Clarifications**

---

---

You are instructed to read and to note the following described changes, corrections, clarifications, omissions, deletions, additions, and statements pertinent to the Contract Bid and Construction Documents:

The Addendum No. 1 is part of the contract Bid and Construction Documents and shall govern in the performance of the Work.

**Clarification Items:**

- G-1 Addendum No. 1 shall be marked with Revision #1, REV #1 and/or Delta 1 or similar on drawings attached.
- G-2 Bidders need to provide a unit price to sawcut and remove concrete for plumbing trenches. This will also require a separate mobilization.
- G-3 Bidders may provide a separate price for the exterior site demolition. Bidders are not required to bid the site demolition. This will also require a separate mobilization.

**Architectural Items:**

- A-1 Sheet A-101 – FIRST DEMOLITION PLANS:
  - A-1.A Area associated with note '25' sawcut and removal of slab for future access computer flooring increased.
  - A-1.B Added note '28' to remove EIFS and metal panel above concrete retaining wall West of existing transformer, section of EIFS associated with tenant signage on the South end of the awning is to remain.
  - A-1.C Added note '29' to grind down remaining railing fasteners.
  - A-1.D General note added to remove all adhesive on concrete slab and mezzanine plywood subfloor.

**END OF ADDENDUM**

ADDENDUM NO. 1



**schwerdt design group**  
 architecture | interiors | planning  
 2231 sw wansmaker rd. suite 303  
 topeka, kansas 66614-4275  
 phone: 785.273.7540  
 fax: 785.273.7579  
 500 north broadway. suite 200  
 oklahoma city, ok 73102  
 phone: 405.231.3105  
 fax: 405.231.3115

PROGRESS PRINT

NOT FOR CONSTRUCTION

DATE: 06/28/2021

**ADVISOR'S EXCEL - SERVERY & TV/RADIO STUDIO**  
**GAGE CENTER - 4115 SW HUNTOON ST**  
 TOPEKA, KS 66604

SUBMISSION DATES  
 PROGRESS PRINT ONLY  
 ADD-1 06-28-2021

SHEET TITLE  
 DEMOLITION PLANS

PROJECT NUMBER  
**200014**

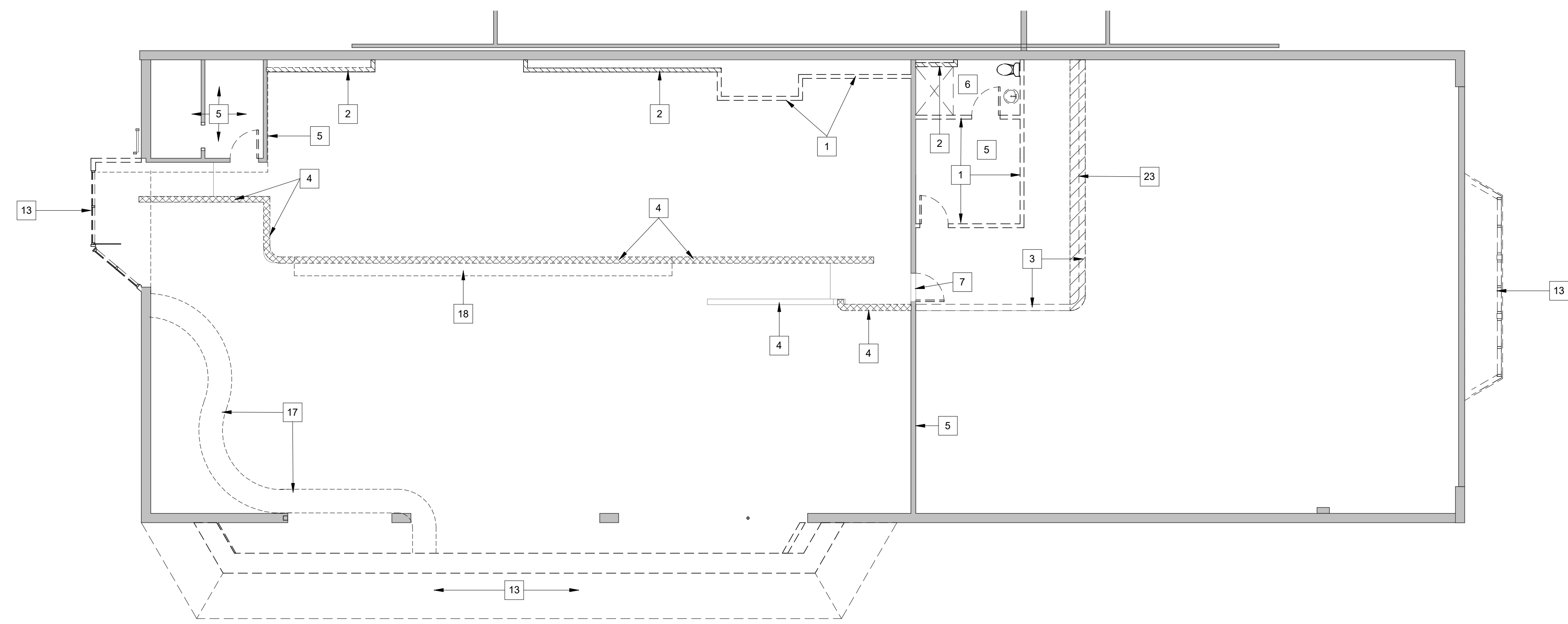
SHEET NUMBER  
**D-101**

**DEMOLITION NOTES**

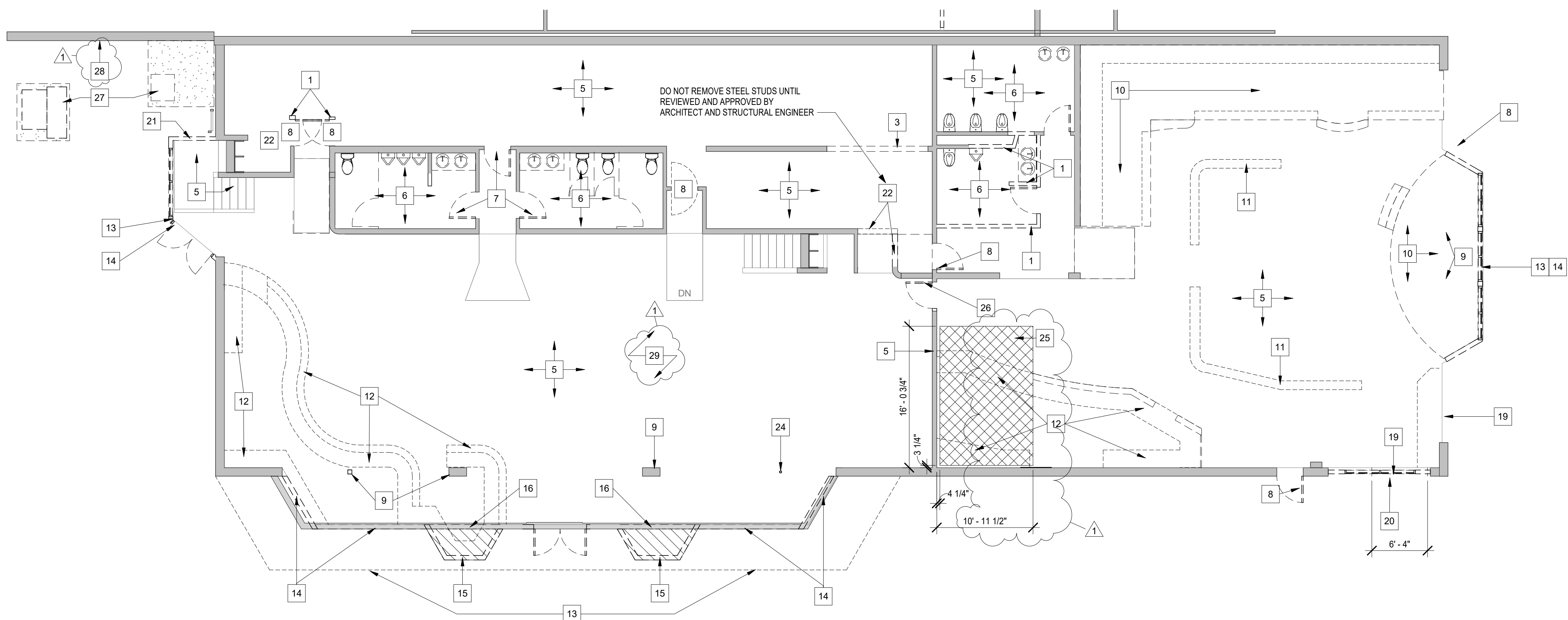
- 1 REMOVE STEEL STUD AND GYP BOARD PARTITION INCLUDING DOORS AND FRAMES AS SHOWN ON DRAWINGS.
- 2 REMOVE GYP. BOARD FROM STEEL STUD PARTITION TO PROVIDE ACCESS BEHIND PARTITION. VERIFY WITH ARCHITECT TO DETERMINE IF ENTIRE PARTITION IS TO BE REMOVED.
- 3 REMOVE GYP. BOARD AND STEEL STUD KNEE WALL DOWN TO FLOOR.
- 4 REMOVE GYP. BOARD AND WOOD TRIM FROM STEEL STUD KNEE-WALL, STUDS TO REMAIN.
- 5 REMOVE GYP. BOARD FROM PARTITIONS AND CEILINGS THAT ARE TO REMAIN, TYP.
- 6 REMOVE TOILET PARTITIONS, ACCESSOIRES, CASEWORK, AND PLUMBING FIXTURES. CAP ALL PLUMBING NOT TO BE REUSED. COORDINATE WITH MEP DEMOLITION DRAWINGS.
- 7 REMOVE DOOR AND HARDWARE, FRAME TO REMAIN.
- 8 REMOVE DOOR, FRAME AND HARDWARE.
- 9 COLUMNS TO REMAIN. REMOVE GYP. BOARD AND STUDS.
- 10 REMOVE RAISED WOOD PLATFORM, STEPS, AND RAILINGS.
- 11 REMOVE WOOD AND METAL BAR RAILING SYSTEM.
- 12 REMOVE CONCRETE COUNTER AND WOOD FRAME BAR, BASE CABINETS AND CONCRETE FOOT REST.
- 13 REMOVE WOOD AND METAL ROOF STRUCTURE.
- 14 REMOVE EXTERIOR WALL AND ALUMINUM WINDOW SYSTEM DOWN TO CONCRETE SLAB.
- 15 REMOVE WALL AND ALUMINUM WINDOW BUMP OUTS DOWN TO CONCRETE SLAB. SAWCUT AND REMOVE CONCRETE FLOOR SLAB AND FOUNDATION DOWN TO A LEVEL THAT WILL NOT INTERFERE WITH NEW FOUNDATION AND SLAB WORK.
- 16 EXCAVATE AS NEED TO INSTALL NEW CONCRETE FOUNDATION UNDER SLAB. COORDINATE WITH STRUCTURAL.
- 17 REMOVE METAL CLAD AND FRAMED BULKHEAD ABOVE BAR.
- 18 REMOVE SURFACE MOUNTED PLYWOOD BUILT-OUT BOX ALONG THE TOP EDGE OF THE MEZZANINE KNEE-WALL.
- 19 REMOVE ALUMINUM WINDOW SYSTEM AND PANELING.
- 20 VERIFY ON SITE EXISTING STEEL BEAM AT 10'-0" A.F.F EMBEDDED IN MASONRY WALL. SAWCUT OPENING MASONRY UNDER BEAM DOWN TO FLOOR FOR NEW OVERSIZED DOOR AND FRAME. COORDINATE OPENING WITH STRUCTURAL.
- 21 REMOVE EXTERIOR PLYWOOD SIDING, VERIFY CONDITION OF STEEL STUD WALL WITH ARCHITECT TO DETERMINE IF STUD WALL IS TO BE REMOVED.
- 22 REMOVE GYP. BOARD FROM STEEL STUDS AND COORDINATE WITH ARCHITECT AND STRUCTURAL ENGINEER TO VERIFY IF PARTITIONS ARE LOAD BEARING.
- 23 SAWCUT AND REMOVE PORTION OF PLYWOOD FLOORING AND STEEL STUD FLOOR JOIST BACK TO FACE OF LOAD BEARING PARTITION BELOW. ATTACH NEW STEEL STUD RUNNER ALONG FACE TO RE-ANCHOR END OF JOISTS.
- 24 REMOVE COLUMN
- 25 SAWCUT AND REMOVE SLAB AREA INDICATED BY CROSSHATCH
- 26 REMOVE DOOR AND FRAME, SALVAGE FRAME FOR REUSE
- 27 TRANSFORMER, JUNCTION BOX, AND PADS TO BE REMOVED ONCE NEW TRANSFORMER IS IN PLACE. COORDINATE ANY DOWNTIME OF TENANT POWER W/ OWNER. REF-MEP FOR ADDITIONAL INFORMATION.
- 28 REMOVE EIFS AND CORRUGATED METAL PANEL ABOVE CONCRETE RETAINING WALL. SECTION OF EIFS W/ TENANT SIGNAGE TO REMAIN. REFERENCE NEW CONSTRUCTION PLANS
- 29 GRIND DOWN RAILING FASTENERS THAT REMAIN IN EXISTING SLAB

**GENERAL NOTES**

1. REFERENCE CIVIL & MEP DEMOLITION DRAWINGS FOR ADDITIONAL INFORMATION.
  2. REMOVE ALL MIRRORS, ACOUSTICAL WALL PANELS AND ABANDONED FASTENERS AND ATTACHMENTS.
  3. REMOVE ADHESIVE FROM EXISTING CONCRETE SLAB AND MEZZANINE PLYWOOD SUBFLOOR.
- EXISTING MASONRY OR WOOD STUD PARTITION TO REMAIN. REMOVE ALL GYP. BOARD AND PANELING DOWN TO STUDS.
  - REMOVE STUD AND GYP BOARD PARTITION INCLUDING DOORS AND FRAMES AS SHOWN ON DRAWINGS.
  - REMOVE GYP. BOARD FROM STUD PARTITION TO PROVIDE ACCESS BEHIND PARTITION. VERIFY WITH ARCHITECT TO DETERMINE IF ENTIRE PARTITION IS TO BE REMOVED.
  - REMOVE GYP. BOARD AND WOOD TRIM FROM KNEE-WALL.



**C1 MEZZANINE DEMOLITION PLAN**  
 SCALE: 1/8" = 1'-0"



**A1 FIRST FLOOR DEMOLITION PLAN**  
 SCALE: 1/8" = 1'-0"

FILE PATH: C:\Users\Lauren\Documents\2021 03-12\_200014 AE Cafe\_Studio - Bullfrogs - R20\_infl.KK7H.rvt  
 DATE: 6/28/2021 10:45:22 AM  
 DRAWN BY: Author